

1.6/5.6 Connectors to DIN 47295

These 75 ohm coaxial connectors are manufactured to the highest specification and are extensively used in the telecommunications industry.

Specification

Mechanical data

Materials

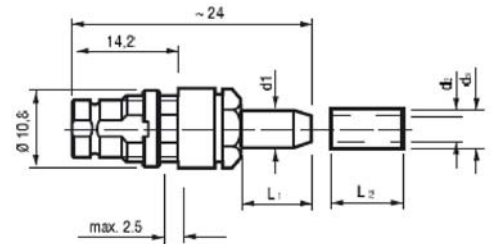
Housing, fixing components	Brass
Spring contacts	Beryllium
Insulated parts	Teflon
Insertion/withdrawal forces	DIN 47295
Temperature range	-55°C to + 150°C

Electrical data

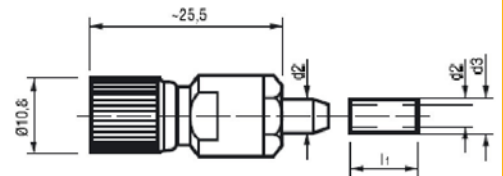
Impedance Z_w	75 Ohms
Max. operating frequency	1 GHz
VSWR	1.3 max (straight)
VSWR	1.5 max (rt. angle)
Insulation resistance	$\geq 10^{12}$ Ohms
Contact resistance	
Inner conductor	≤ 4 m Ohm
Outer conductor	≤ 2 m Ohm
Isolation Voltage	1.5 kV
Operating voltage	500V



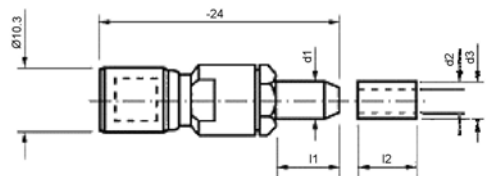
- 1.6/5.6 Straight Bulkhead crimp cable **Socket**
Unique number 9000
[Crimp Table](#)
[Ordering Code](#)



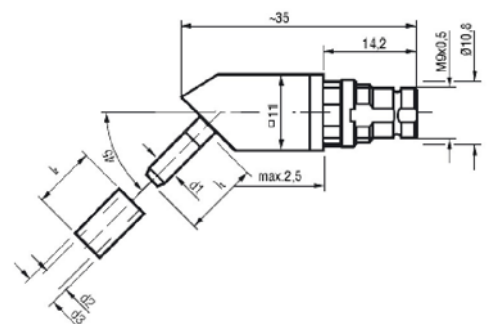
- 1.6/5.6 Straight screw fastening crimp cable **Plug**
Unique number 9001
[Crimp Table](#)
[Ordering Code](#)



- 1.6/5.6 Straight snap fit crimp cable **Plug**
Unique number 9002
[Crimp Table](#)
[Ordering Code](#)

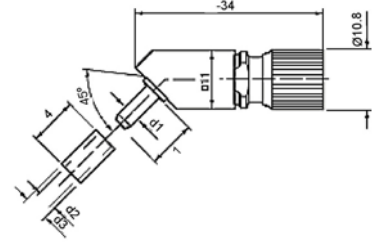


- 1.6/5.6 45° crimp cable **Socket**
Unique number 9003
[Crimp Table](#)
[Ordering Code](#)

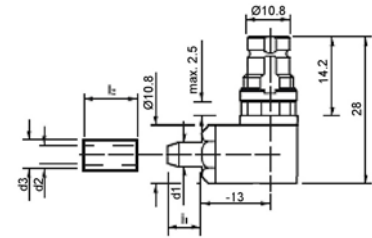




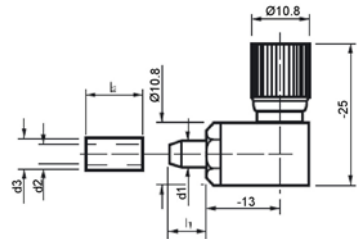
- 1.6/5.6 45° screw fastening crimp cable **Plug**
Unique number 9004
[Crimp Table](#)
[Ordering Code](#)



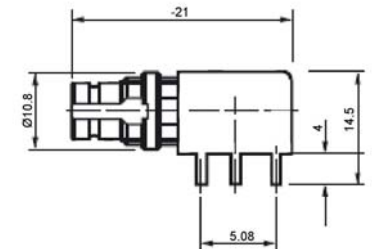
- 1.6/5.6 90° screw cable **Socket**
Unique number 9005
[Crimp Table](#)
[Ordering Code](#)



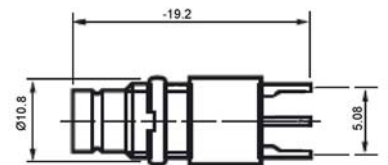
- 1.6/5.6 90° screw fastening crimp cable **Plug**
Unique number 9006
[Crimp Table](#)
[Ordering Code](#)



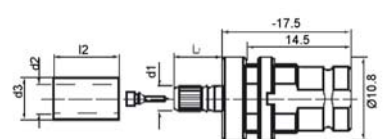
- 1.6/5.6 90° **Socket** PCB mounting
Unique number 9007
[Ordering Code](#)



- 1.6/5.6 straight **Socket** PCB mounting
Unique number 9009
[Ordering Code](#)



- 1.6/5.6 straight crimp cable **Socket**
Unique number 9010
[Crimp Table](#)
[Ordering Code](#)

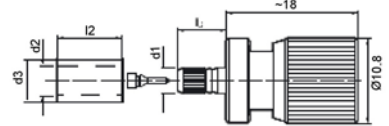


Co-axial Connectors

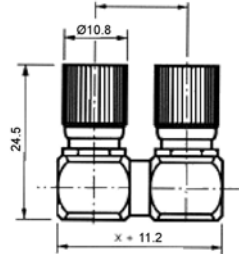
Cambridge Connectors



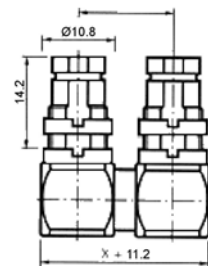
- 1.6/5.6 straight crimp cable **Plug**
Unique number 9011
[Crimp Table](#)
[Ordering Code](#)



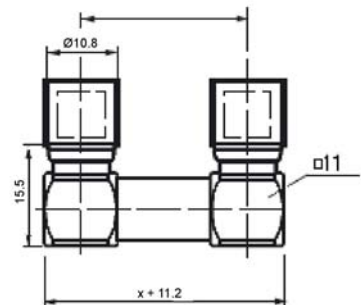
- 1.6/5.6 U-Link screw fastening **Plug**
Unique number 9012
[Ordering Code](#)



- 1.6/5.6 U-Link **Socket**
Unique number 9013
[Ordering Code](#)



- 1.6/5.6 U-Link snap-fit **Plug**
Unique number 9014
[Ordering Code](#)



- 1.6/5.6 U-Link screw fastening **Plug** with monitor socket
Unique number 9008
[Ordering Code](#)

